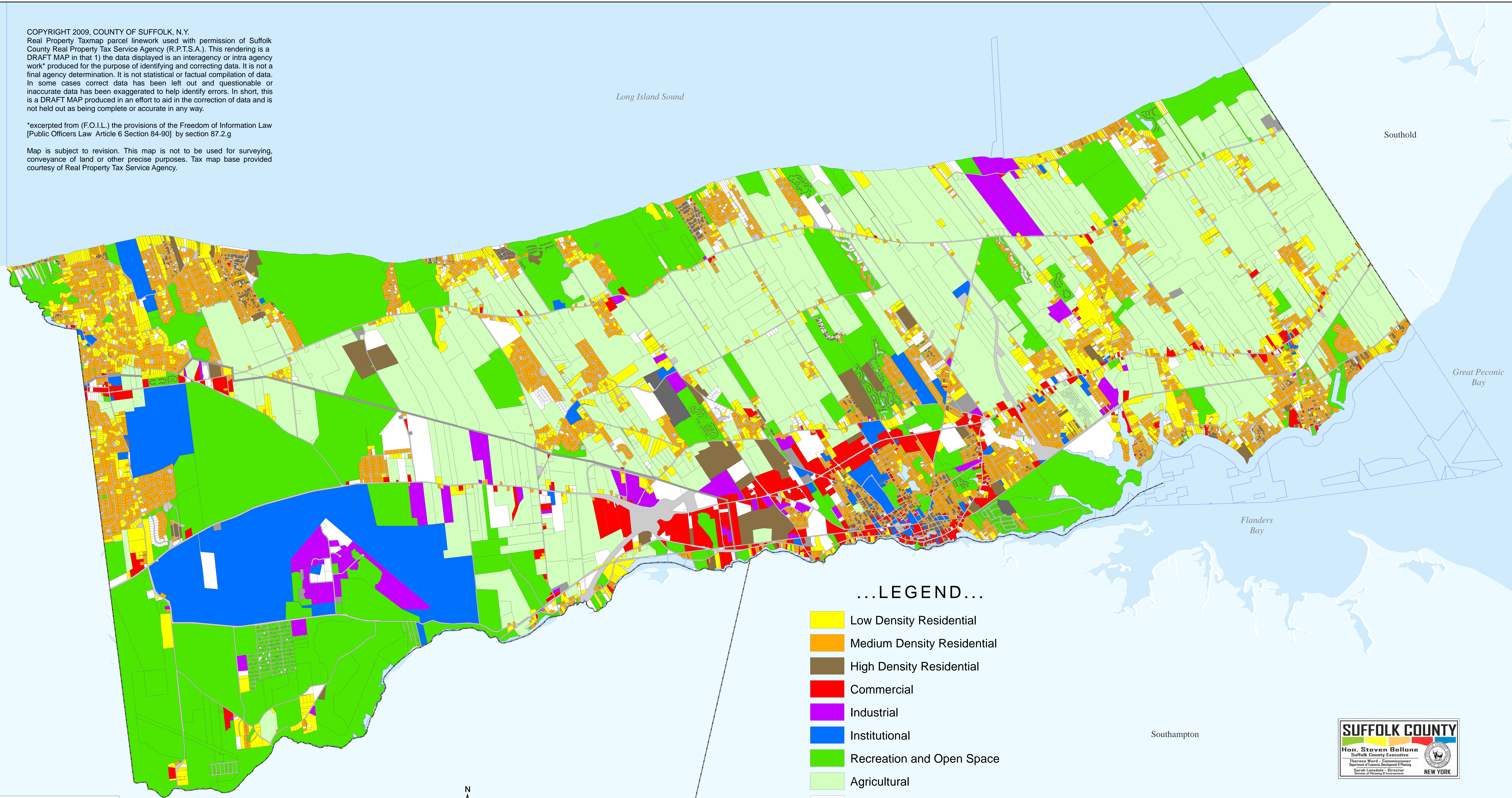


TOWN OF RIVERHEAD

COPYRIGHT 2009, COUNTY OF SUFFOLK, N.Y.
 Real Property Taxmap parcel linework used with permission of Suffolk County Real Property Tax Service Agency (R.P.T.S.A.). This rendering is a DRAFT MAP in that 1) the data displayed is an interagency or intra agency work* produced for the purpose of identifying and correcting data. It is not a final agency determination. It is not statistical or factual compilation of data. In some cases correct data has been left out and questionable or inaccurate data has been exaggerated to help identify errors. In short, this is a DRAFT MAP produced in an effort to aid in the correction of data and is not held out as being complete or accurate in any way.

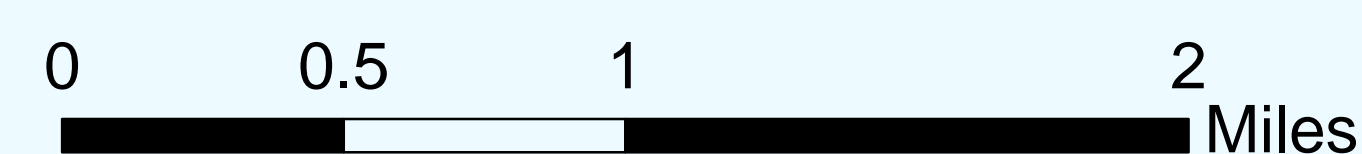
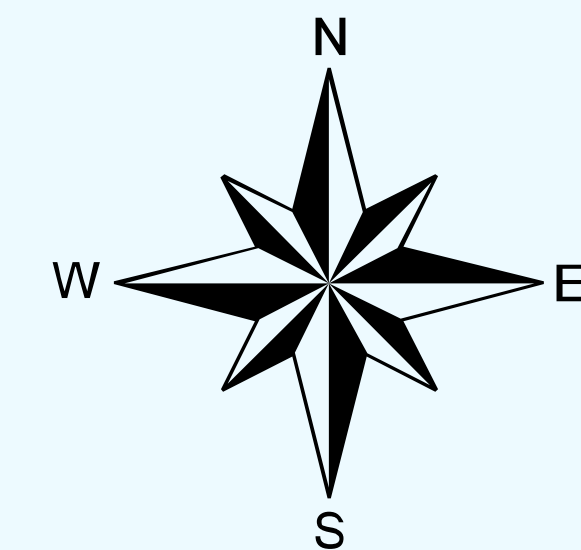
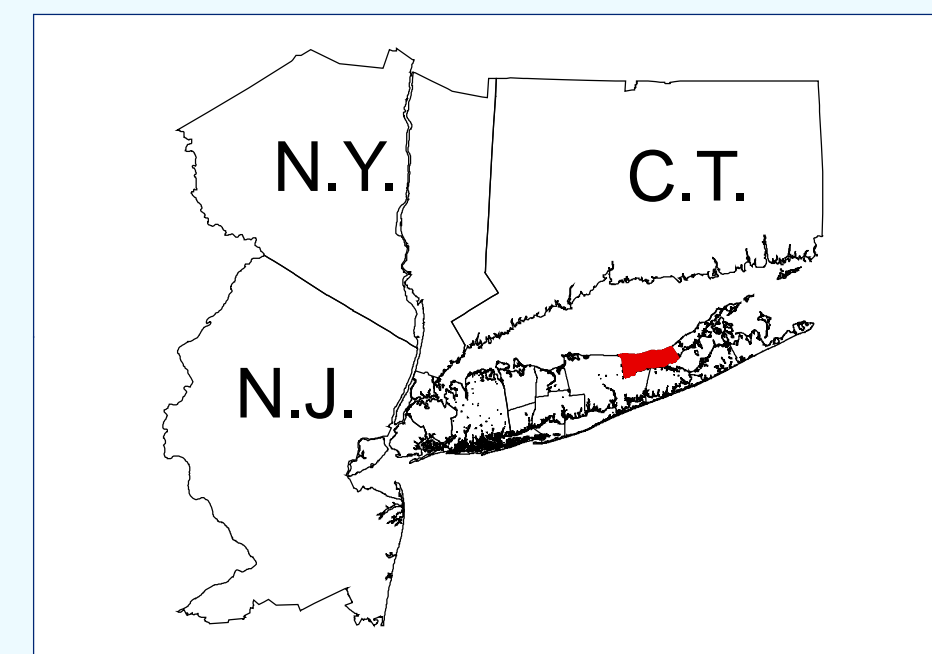
*excerpted from (F.O.I.L.) the provisions of the Freedom of Information Law [Public Officers Law Article 6 Section 84-90] by section 87.2.g

Map is subject to revision. This map is not to be used for surveying, conveyance of land or other precise purposes. Tax map base provided courtesy of Real Property Tax Service Agency.



...LEGEND...

- Low Density Residential
- Medium Density Residential
- High Density Residential
- Commercial
- Industrial
- Institutional
- Recreation and Open Space
- Agricultural
- Vacant
- Transportation
- Utilities
- Waste Handling and Management
- Underwater Land



2009 EXISTING LAND USE

Town of Riverhead
 Suffolk County, New York